

MULTIGON TRIPLEX COLOR DOPPLER IMAGER MODEL IOC-1

ADDS COLOR DOPPLER IMAGING TO YOUR TCD SPECIFICATIONS:

**Desktop PC/Notebook PC/Tablet PC connectivity via
USB PORT and light weight provides a true mobility, a
real possibility to be everywhere you want with your
ultrasound system**

Imaging Modes

- B
- B+B
- 4B
- B+M
- M

Scanning Method

Ultrasound imaging

- ultrasound image size:
automatically adjustable to
screen resolution
- gray scale: 256
- full motion and full size real-time
ultrasound imaging, up to 120

- electronic linear
- electronic convex
- electronic microconvex
- scanning depth: 3-24 cm

fps (depends on selected scan depth, scan angle, focus mode, High Line Density setting, computer speed)

- cineloop recording/play: several thousands frames (depends on computer memory size and scan mode)
- zoom mode: from 60% to 600% in all modes (Scan, Freeze, B, B+B, 4B, M-zoom, cineloop and etc)
- viewing area variable for frame rate maximizing: 6 steps
- thumbnail mode: up to 32 images
- "Freeze" mode
- "Auto Freeze" mode

Focusing

- digital transmit focusing
- multi focus mode:
 - transmit/receive focusing
 - programmable focus area presets
- dynamic focus mode:
 - transmit variable focus
 - dynamic receive focus

Transducers

5-10 MHZ LINEAR ARRAY
TRANSDUCER FOR VASCULAR

Functions

- mouse / trackball / keyboard operation
- image and video save / load
 - AVI
 - JPG
 - BMP
 - PNG
 - TIF
 - DCM (DICOM uncompressed)
 - DCM (DICOM-JPEG RGB/YBR)
 - DCM (DICOM-JPEG RGB/YBR Video)
- unlimited programmable presets for clinically specific imaging
- anatomical icons with transducer position indicator
- direct e-mail with image or video attachment via Internet
- DICOM
- printing on system printer
- TV output via computer display adapter

Processing

- High Line Density scan mode for better resolution
- TGC Control, 5-10 sliders (customizable)
- dynamic range control
- overall gain control
- M - mode sweep speed control
- acoustic power control
- variable frame averaging
- brightness, contrast
- advanced gamma control: 8 fixed curves, 8 user defined (custom)
- scan direction, rotation, up-down controls
- negative / positive control
- bi-linear interpolation
- echo enhancement control
- noise rejection function
- speckle reduction and structure improvement: 8 algorithms

- Verification SCU
- Modality Worklist (MWL) SCU
- Modality Performed Procedure Step (MPPS) SCU
- Store SCU (images, cines)
- Print SCU (grayscale, color)

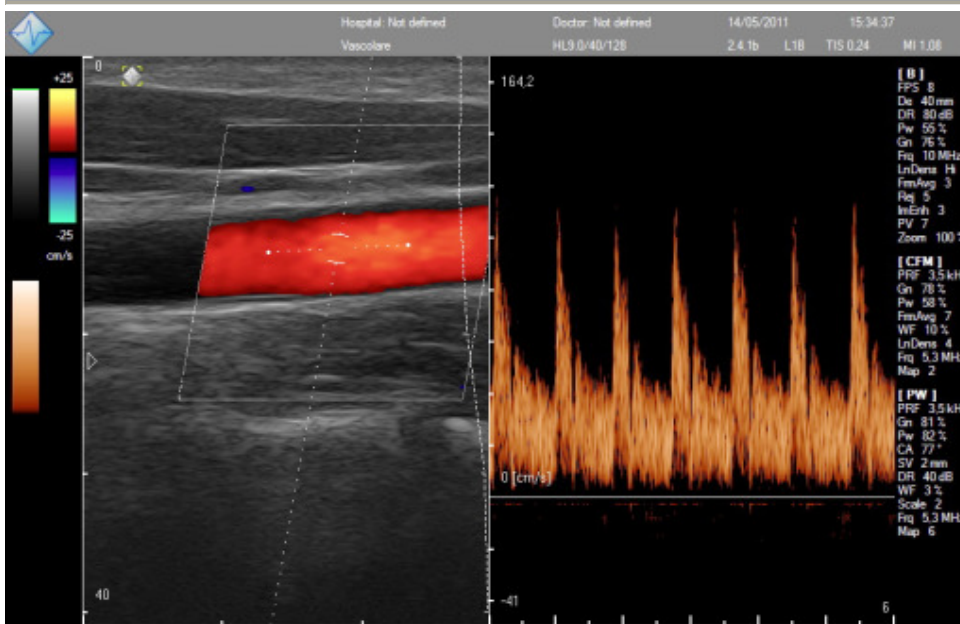
- - B+M layout position, size
 - ultrasound area size
 - font size

General Measurements and
Calculations

- B mode general measurements and calculations
 - Distance
 - Length (method: 1 trace)
 - Area, Circumference (methods: 1 ellipse, 1 trace, 1 distance)
 - Volume (methods: 1 distance, 2 distances, 3 distances, 1 ellipse)
 - Angle (methods: 2 distances, 3 distances)
 - Stenosis % (methods: 2 distances, 2 ellipse or trace areas)
 - A/B Ratio (methods: 2 distances, 2 ellipse or trace areas, 2 ellipse or trace circumferences)
- M mode general measurements and calculations
 - Distance, Time, Velocity
 - Heart Rate (methods: 1 beat, 2 beats)
 - Stenosis % (method: 2 distances)
 - A/B Ratio (methods: 2 distances, 2 times, 2 velocities)

○

CAROTID TRIPLEX IMAGE



**ADD COLOR DOPPLER
ULTRASOUND TO YOUR TCD**

